



# **USER GUIDE**

For "THE SWIMSUIT DRYER"



# Table of Contents

<b>1</b>	<b>LOCATION &amp; INFORMATION DIAGRAMS</b> .....	<b>4</b>
<b>2</b>	<b>PURPOSE</b> .....	<b>5</b>
2.1	PROPER USAGE AND LIABILITY .....	5
2.2	IDENTIFICATION & CERTIFICATION .....	5
<b>3</b>	<b>THE SWIMSUIT DRYER INFORMATION</b> .....	<b>6</b>
3.1	FEATURES AND BENEFITS .....	6
3.2	WHERE WOULD YOU EXPECT TO FIND THE SWIMSUIT DRYER .....	6
3.3	ITEMS SUPPLIED WITH THE SWIMSUIT DRYER .....	7
3.4	ENVIRONMENT AND LOCATION OF INSTALLATION .....	7
<b>4</b>	<b>INSTALLING THE SWIMSUIT DRYER</b> .....	<b>8</b>
4.1	INSTALLATION TOOLS REQUIRED .....	8
4.2	SECURING MOUNTING BRACKET .....	8
4.3	INSTALLING THE SWIMSUIT DRYER .....	9
4.4	CONNECTING THE SWIMSUIT DRYER TO A WASTE OUTLET .....	10
4.5	CONNECTING POWER TO THE SWIMSUIT DRYER .....	11
<b>5</b>	<b>INSTRUCTIONS FOR USING THE SWIMSUIT DRYER</b> .....	<b>12</b>
5.1	INSTRUCTIONS .....	12
<b>6</b>	<b>MAINTENANCE, SERVICING &amp; CLEANING</b> .....	<b>13</b>
6.1	CLEANING REQUIREMENTS .....	13
6.2	CLEANING INSTRUCTIONS .....	14
6.3	WEEKLY CLEANING REQUIREMENTS .....	14
6.4	MONTHLY CLEANING REQUIREMENTS .....	14
6.5	FOUR WEEKLY MAINTENANCE/ SAFETY REQUIREMENTS .....	15
<b>7</b>	<b>MALFUNCTIONS/ TROUBLESHOOTING GUIDE</b> .....	<b>16</b>
7.1	LEAKING .....	16
7.2	OPERATIONAL PROBLEMS .....	16
<b>8</b>	<b>WARRANTIES – TERMS AND CONDITIONS</b> .....	<b>17</b>
8.1	WARRANTY LENGTH .....	17



8.2	WARRANTY TERMS AND CONDITIONS .....	17
9	THE SWIMSUIT DRYER PCB DIAGRAM.....	18
10	TECHNICAL .....	19

# SWIMSUIT DRYER'S RECOMMENDED LOCATION DIAGRAM

## WARNING

This diagram is for reference only. It must not be used as the sole reference for the installation of the Swimsuit Dryer.

The Swimsuit Dryer must be installed by a Professional Tradesman i.e. an electrician. Should the installer have any questions please contact a Swimsuit Dryer Company Representative.



Approximate height is 165cm from the floor to the top of the wall sign.



FLOOR



---

## 2 Purpose

The purpose of the Swimsuit Dryer is to give the user the facility to remove water from their Swimsuits quickly, thus increasing their satisfaction with the pool experience, encouraging the user to continue to use the pool, sauna, steam room and other wet facilities offered. The Swimsuit Dryer has been designed, not only to increase the user's satisfaction, but to also offer a low-cost maintenance solution for the purchaser.

### 2.1 Proper usage and liability

---

The Swimsuit Dryer is intended to dry Swimsuits ONLY, neither The Swimsuit Dryer Company, the purchaser, nor the facility where the Swimsuit Dryer is installed will not be liable, or take responsibility for any damages to swimming costumes where the user has not properly followed the instructions given.

The appliance is not to be used by persons (including children) with reduced physical, sensory or mental capabilities, or lack of experience and knowledge, unless they have been given supervision or instruction

### 2.2 Identification & Certification

---

Please see the label located on the bottom right hand side of The Swimsuit Dryer for the following Information:

- Identification number: This is the unique Serial Number for your Swimsuit Dryer.
- Certification: Confirms the Swimsuit Dryer conforms to CE and any other certification.
- Contact Details: Contact details should you need to contact us.
- Version number: Your current version



---

## 3 The Swimsuit Dryer Information

### 3.1 Features and Benefits

---

The Swimsuit Dryer's key features are:

- Easy to use
- Simple instructions
- 18 – 10 Seconds Drying time
- Increases Satisfaction for pool users
- Changeable outer case
- Built in Brake Motor
- Manual Self Start-Stop
- Uses no Heat
- Low maintenance required
- Easy Installation

### 3.2 Where Would You Expect To Find the Swimsuit Dryer

---

The Facilities that a user could expect to find The Swimsuit Dryer installed in are:

- Health Clubs • Gyms • Public Swimming Pools • Hotels with Leisure Facilities • Spas • Holiday Resorts • Universities • Wellness Centers • Recreation Centers • Cruise Liners • Any Commercial Property with a pool or wet area.

---

**Note:** Please visit <http://www.swimsuitdryer.com> for more information or contact us.

---



### 3.3 Items Supplied with the Swimsuit Dryer

---

The Swimsuit Dryer will be supplied with the following items. The items listed below must be kept should the unit experience a fault in or out of warranty, and in order to carry out any necessary maintenance.

- Shipping Box and Packaging.
- User Manual
- Security Screw Driver
- Swimsuit Dryer Cleaning Brush
- Securing Bracket
- Stainless Steel Bolts
- Mounting Bracket
- Cleaning Towel

### 3.4 Environment and Location of Installation.

---

The Swimsuit dryer's recommended installation location is one of the following areas listed below:

**Warning:** We recommend the Swimsuit Dryer is installed 2 -3 meters away from a wet area / shower area as extremely high humidity could reduce life of the Swimsuit Dryer.

---

- In a changing room, outside a changing room, in a corridor, or in an area where facility users have access, a dry or semi wet area, and a location where the waste water can be removed.

**Warning:** The installation location must be adequately ventilated if the Swimsuit Dryer is installed in a worktop.

---

The Swimsuit Dryer Must NOT be installed by anyone in any of the following locations:

- Around a Pool, inside a shower area, outside, or in any wet area where the Swimsuit Dryer may be exposed to direct water.
- An area, with a temperature of more than 40 degrees centigrade, or with an area with low ventilation.



---

## 4 Installing the Swimsuit Dryer

### 4.1 Installation Tools Required

---

To install the Swimsuit Dryer you will require the following items not supplied with the Swimsuit Dryer:

- A suitable Masonry drill.
- A marker pen.
- Tape Measure.
- Spirit level.
- 7 x Wall Bolts
- 7 x Wall Plugs

The Swimsuit Dryer Company recommends the installer of the Swimsuit Dryer is a qualified tradesman. Should the facility where the Swimsuit Dryer is installed wish to have the Swimsuit Dryer plumbed in please consult a professional plumber.

### 4.2 Securing Mounting Bracket

---

- Please ensure the wall where the bracket will be installed is able to support approximately 30kg/ 66lbs of weight.
- Once a suitable and appropriate location has been found to install the Swimsuit Dryer you will need to secure the mounting bracket to the wall. Place the mounting bracket on the wall, check with a spirit level to ensure the Mounting bracket is level. Mark your locating holes and proceed to drill the holes, insert wall fixings, then use the screws ( not provided ) to secure the bracket to the wall.
- The Swimsuit Dryer's recommended height from the floor to the top of the lid is approximately 110cm. Please remember the lid will need approximately 30cm clearance from the top to allow the lid to open.





---

**Warning:** After securing the mounting bracket to the wall ensure it is level and fastened to the wall securely!

---

- Please refer to Utilities Drawing for more information on page 4.

### 4.3 Installing the Swimsuit Dryer

---

Once the mounting plate has been securely fastened to the wall, remove the Swimsuit Dryer from its packaging.

- Place the Swimsuit Dryer on the mounting bracket.
- Remove the two screws located underneath The Swimsuit Dryer.
- Use the removed screws to then secure the securing bracket to the bottom of the Swimsuit Dryer.
- Where the hole is located on the bracket drill a further hole into the wall, insert one more wall fixing and secure with the final remaining screw. Please refer to picture for more information located on the next page 5.

---

**Warning:** When removing the transit bar located underneath the unit make sure to screw the bolts back into the dryer.

---



## 4.4 Connecting The Swimsuit Dryer to a waste outlet

---

We strongly recommend The Swimsuit Dryer is plumbed in to the waste water works. The Swimsuit Dryer Company feels this is the most professional approach. Please ensure your plumbing is carried out by a qualified plumber and that he is in conformance with all the local plumbing and waste water regulations. Unfortunately, the Swimsuit Dryer Company can not offer any services or advice with regards to plumbing as this depends on the facilities type of water pipes, local regulations and the plumber's discretion. For more information please view the Utilities Diagram, and consult your local Plumbing company.

The Swimsuit Dryer hose is 600mm approximately from the body unless the purchaser has requested a custom length hose.

Example of Swimsuit Dryer plumbed into the wall.





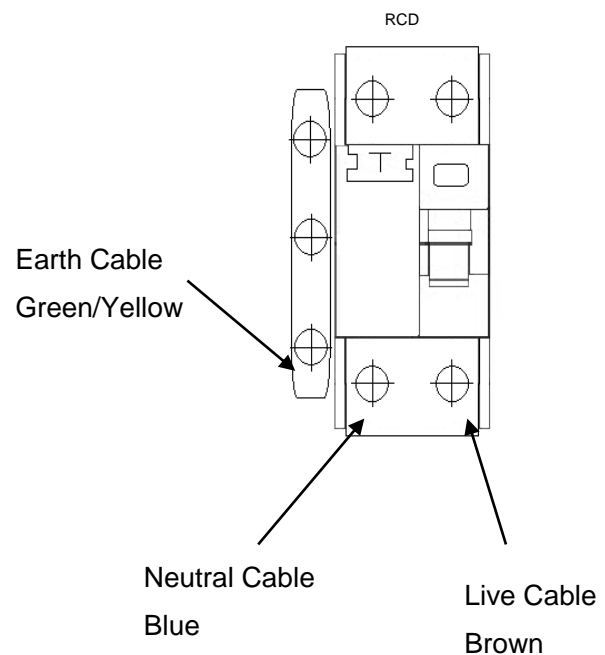
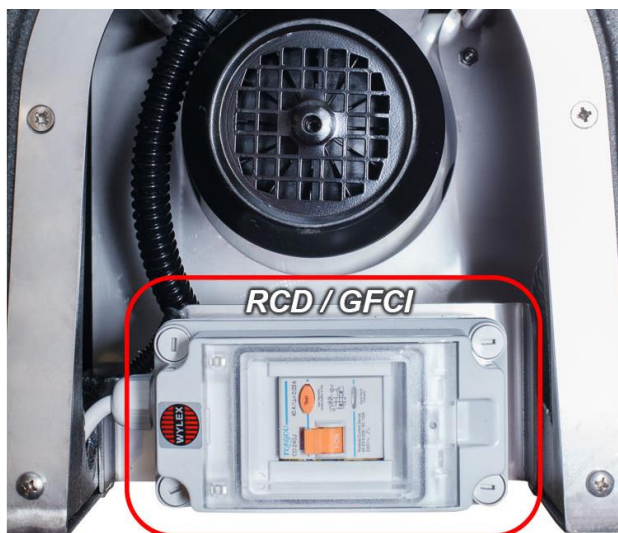
#### 4.5 Connecting power to The Swimsuit Dryer

As safety is our number one priority we highly recommend a qualified electrician connects the Swimsuit Dryer to the fuse spur, or a circuit breaker of the correct supply voltage. the Swimsuit Dryer MUST be installed in conformance with the current local electrical regulations.

1. Find your 3 core power cable.
2. Feed the cable through the mains supply cable hole ( view Information diagram on page 5 ).
3. Wire the 3 core cable into your GFCI case via the cable gland.
4. Connect the Live, neutral and earth cables to the GFCI.

To connect your 3 core power cable to your GFCI please view the diagram below:

RCD located underneath





## Operating Instructions

Persons under the age of 16 must have adult supervision.  
This equipment is for drying absorbent swimwear.

Always make sure the basket is **STATIONARY** before placing your hand or any items into the dryer.

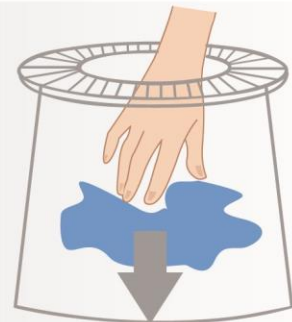
- **ONE ITEM**

Place ONE item inside the basket with any strings or straps facing down. If you have multiple items to dry please place only ONE in the basket per use.



- **PUSH DOWN**

Push item down at least 4cm below the brush seal to avoid damage.



- **PRESS LID**

Press the lid down, hold for 10 seconds then remove your item.



The Swimsuit Dryer Company LTD and owners of this equipment are not liable for any items damaged or personal injury caused by incorrect use or failure to follow instructions.

Manufactured in the UK by:

The Swimsuit Dryer Company LTD Tel: +44 1530 231 292 Email: [sales@swimsuitdryer.com](mailto:sales@swimsuitdryer.com)



---

## 6 Maintenance, Servicing & Cleaning

The Swimsuit Dryer has been manufactured to be a low maintenance low cost item, however all electrical and mechanical equipment requires maintenance. The Maintenance required is minimal depending on usage, but important to keep The Swimsuit Dryer clean and pleasant for all the users and to insure the **safety** of the user is not compromised. **Please read on for weekly, and yearly requirements.**

### 6.1 Cleaning Requirements

---

Every week the Swimsuit Dryer should be checked, please follow the instructions below:

Equipment Required:

- Cleaner and Disinfectant
- Hand Towel
- Security Screw Driver

---

**Warning:** DO NOT pour large amounts of water or cleaning solution directly into the Swimsuit Dryer.

---

- If too much water is poured directly into the Swimsuit Dryer while it is not in operation then the Swimsuit Dryer may not be able to remove the water quick enough and could damage the motor.



## 6.2 Cleaning Instructions

---

To keep your Swimsuit Dryer clean and sanitized, we recommend you use the specialized cleaning products once a week.

### 6.3 Weekly Cleaning Requirements

---

#### Step 1

Spray the outer body of the Swimsuit Dryer with the cleaner.

#### Step 2

Use the towel to apply the cleaning solution all over the outside of The Swimsuit Dryer. This will kill 99.99 % of any bacteria and help remove dirt and excess calcium, to keep your Swimsuit Dryer looking as good as new.

### 6.4 Monthly Cleaning Requirements

---

#### Step 1

Lift the lid and remove the top ring cover by unscrewing the 3 security screws using the tool supplied. **When removing the top ring hold the black plungers at the top and pull them up.** Spray the cleaner inside the drum/ basket and down between the drum and liner.

#### Step 2

Re-fit the top ring cover making sure to tighten the security screws. Operate the dryer for 10 seconds to remove any cleaner from inside the drum.

To watch a short video clip on how to clean and maintain your unit please visit our website: <http://www.swimsuitdryer.com>





## 6.5 Four Weekly Maintenance/ Safety Requirements

---

Once a month your RCD/GCFI should be tested as a standard practice on all electrical items including the Swimsuit Dryer.

- Manually test your RCD

To perform a manual RCD test, ensure there is power to the RCD. Open your RCD lid located underneath the Swimsuit Dryer, press the test button. If the RCD switch clicks off, the RCD has passed the test. In the event the switch fails to click off, please contact The Swimsuit Dryer Company, or a qualified electrician as this could indicate your RCD is faulty.

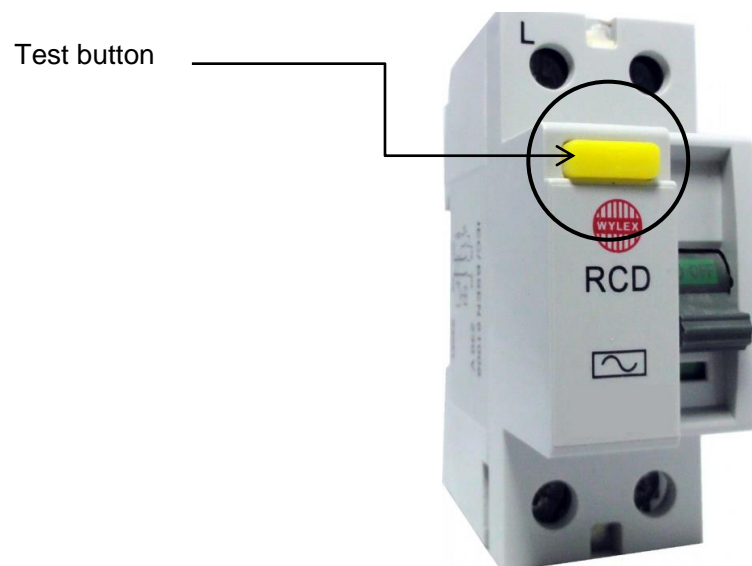


Image for illustration purposes only.



---

## 7 Malfunctions/ Troubleshooting Guide

### 7.1 Leaking

---

In the event The Swimsuit Dryer develops a leak from the bottom of the unit please resolve this immediately to prevent any damage to the motor. Please follow the steps below:

- Use the Security Screw Driver to remove the three stainless steel screws from the Top Ring. Remove the Top Ring. Clean the inner liner with a brush and disinfectant. Should there be any foreign items causing an internal blockage and causing the Swimsuit Dryer to leak please remove these immediately.

### 7.2 Operational problems

---

The Swimsuit Dryer has been designed and manufactured to be a highly reliable and durable machine. Should the product malfunction, and the GFCI has been checked please contact us, and our dedicated technical team will help identify the fault and provide a solution.





---

## 8 Warranties – Terms and Conditions

### 8.1 Warranty Length

---

The Swimsuit Dryer Company offers the following warranty terms:

- Fault within the first 3 months:  
Shipping\*, parts and labor are fully covered. Packaging is chargeable.
- Fault within the first 12 months:  
Parts and labor are fully covered. Packaging is chargeable.
- Fault within the first 2 years.

Motor and brake components are covered ONLY. Labor, parts, shipping and packaging are not covered.

\*Shipping costs are covered within UK, EU and USA.

---

**Warning:** The faulty Swimsuit Dryer MUST be boxed up in the **original box** and all the original packaging must be used to prevent any transit damage, any transit damage caused due to incorrect packaging may be chargeable.

---

### 8.2 Warranty Terms and Conditions

---

The Swimsuit Dryer Company's 12-month warranty on New Swimsuit Dryer's, and where applicable services and repairs will become void if any of the following terms are broken:

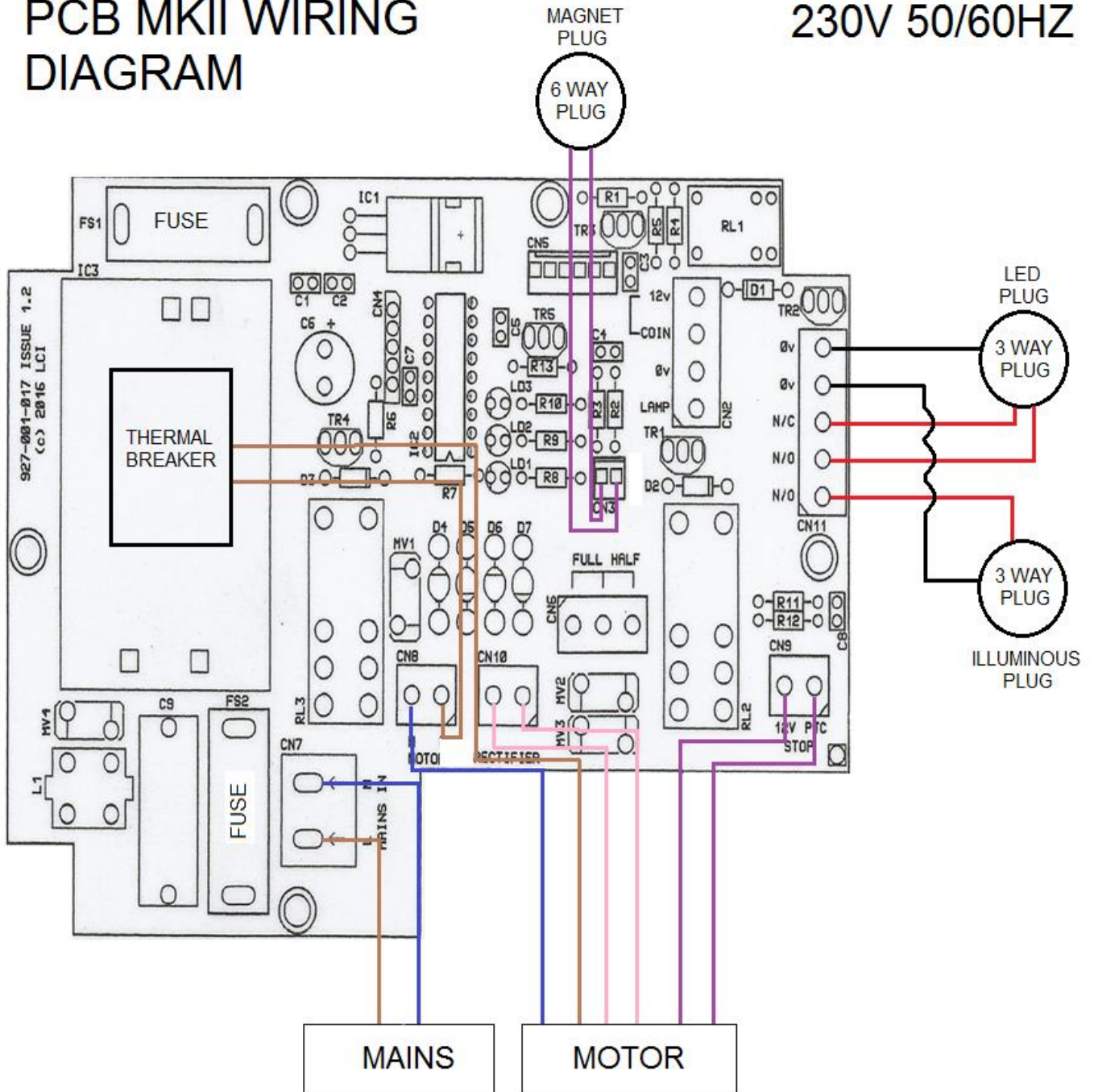
- Any Modified, Incorrect or foreign parts are installed.
- The Swimsuit Dryer is not returned in the correct packaging.
- Swimsuit Dryer has been excessively flooded.



# 9 The Swimsuit Dryer PCB Diagram

## PCB MKII WIRING DIAGRAM

230V 50/60HZ





---

## 10 Technical

### Swimsuit Dryer Dimensions:

Height 590mm x Width 375mm x Depth 365mm

Height 23.22" x Width 14.76" x Depth 14.76"

### Weight:

Approximately 20kg / 44lbs free standing

Approximately 25kg / 55lbs when fully boxed

### Power Consumption:

Standby: approximately 3 watts

Running: approximately 350 watts

### Safety Details:

Smooth plastic body

PAT tested

GFCI Installed & tested

PTO installed within brake motor

low voltage LEDs

IP56 rated control box

5/ 8 AMP Thermal Overload Protector

IP54 rated brake motor

IP66 rated conduit & glands

IP65 rated GFCI enclosure

### Running time:

8-10 seconds

### Power Installation Requirements:

115 Volt 60 Hz local supply.

### Waste pipe length:

Approximately 600 mm/ 23.62" from the bottom of the Swimsuit Dryer.

### Basket / Hub Volume:

Approximately 2 litres

### Waste Plumbing Requirements:

Connects directly to waste outlet: 32mm / 1 1/4

Internal Diameter 28.0mm / 1.10"

Outside Diameter 33.5mm / 1.31"



**Swimsuit Dryer Co Ltd**

***Merrylees Ind Est***

***ENGLAND***

***LE9 9FS***

**Tel: +44 1530 231 292**

**[www.swimsuitdryer.com](http://www.swimsuitdryer.com)**

---

**Swimsuit Dryer LLC**

**Suite 200**

**Box 9149**

**Jackson, WY 83002**

**Tel: 877-7788-306**

**220V – 50/60Hz**